

Oxnard Middle College High School Site Safety Summary



OXNARD MIDDLE COLLEGE HS

STUDENT ARRIVAL & ENTRY

- Student drop off is in Parking Lot G.
- Students and Staff must check in the main office as soon as entering campus and prior to entering any classroom.

STUDENT DISMISSAL

- All students will be dismissed from school at 2:30pm.
- Students may be dismissed earlier with parent permission
- Student pick up is Parking Lot G

STAFF ENTRY & EXIT

Check in will be done in the main office

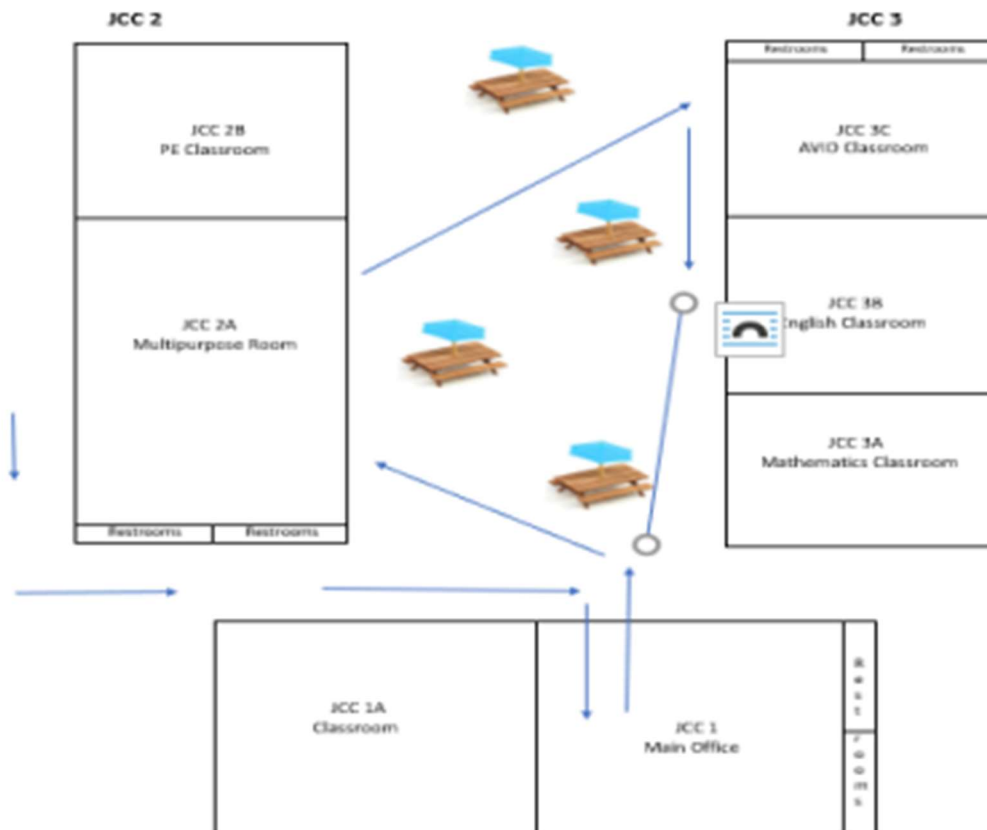
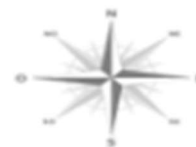
- Masks must be worn as soon as staff enter campus
- Temperature Check first
- Screening survey entered electronically or paper

VISITOR ENTRY & EXIT

- Visitors will park in Parking Lot G
- All visitors must check in the main office



OMCHS





Oxnard Middle College High School Site Safety Summary

OXNARD MIDDLE COLLEGE HS

ADMINISTRATION OFFICE/CAMPUS FLOW

- Maps will be provided with the traffic directions for hallway
- Office has been organized already with signage for traffic flow
- Signs are posted around campus to remind students to wear masks and the direction of the hallways.
- Staff members will be with the students in their POD during the day except during class time.

CAFETERIA/LUNCH

- Students must follow social distance protocols provided
- Pay attention to signage
- Adults available to provide supervision and guidance
- Students will be supervised for social distancing.
- Individual lunch sacks will be brought in for each student.
- Students can eat their food during any break outdoors.
- Tables in quad marked for social distancing

CLASSROOMS

- Classrooms used: JCC1, JCC2A, JCC3C, JCC2C, JCC2A
- Students must not share desks
- Each student desk will have plexi-glass
- Desks will be cleaned at the end of every period. Custodial staff on campus will help with cleaning
- Day custodian will deep clean classrooms at the end of each day.

RESTROOMS

- All restrooms will be available for student use
- Each POD has been assigned specific restrooms to use
- Staff will use Restrooms in main office
- Restrooms will be cleaned periodically during the day

HEALTH EVALUATION ROOM

- NA for OMC

CUSTODIAL CLEANING

- Desks in classrooms will be cleaned between periods if in use
- Classrooms will be cleaned at the end of day

RESTROOMS

- All restrooms will be available for student use
- Each POD has been assigned specific restrooms to use
- Staff will use Restrooms in main office
- Restrooms will be cleaned periodically during the day