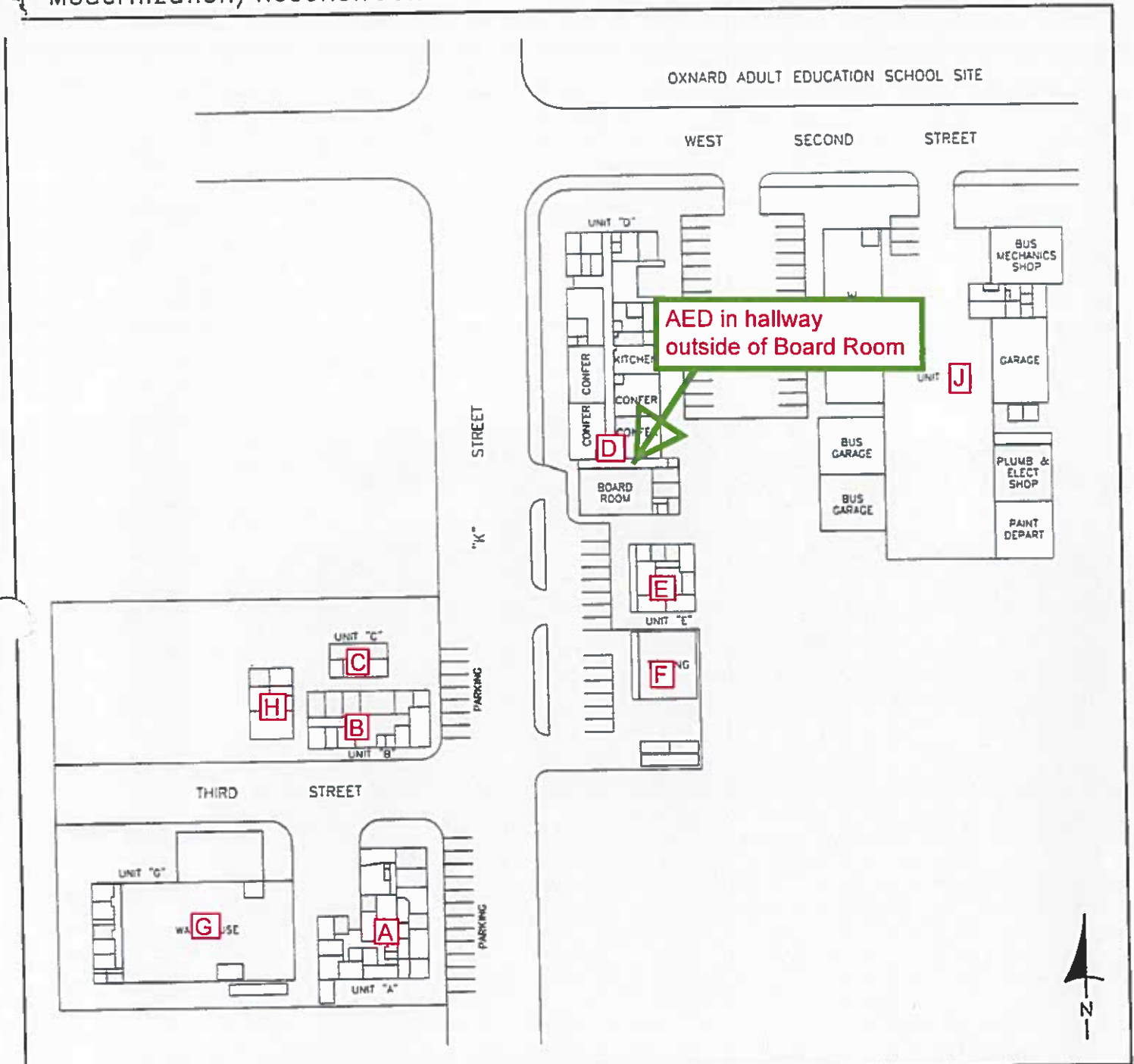


Oxnard Union High School District
 District Administration, Ventura County
 New Construction
 Modernization/Reconstruction

Diagram of Building Area
 Existing 1-A
 Proposed 2-A
 Final 3-A



Siteplan
 District Administration
 309 South "K" Street - Oxnard, CA 93030
 Web Site - www.ouhsd.k12.ca.us
 Phone (805) 385-2500 FAX (805) 483-3069

The above is measured in accordance with the laws and regulations governing the State School Building Lease-Purchase Program.
cadxservices@yahoo.com

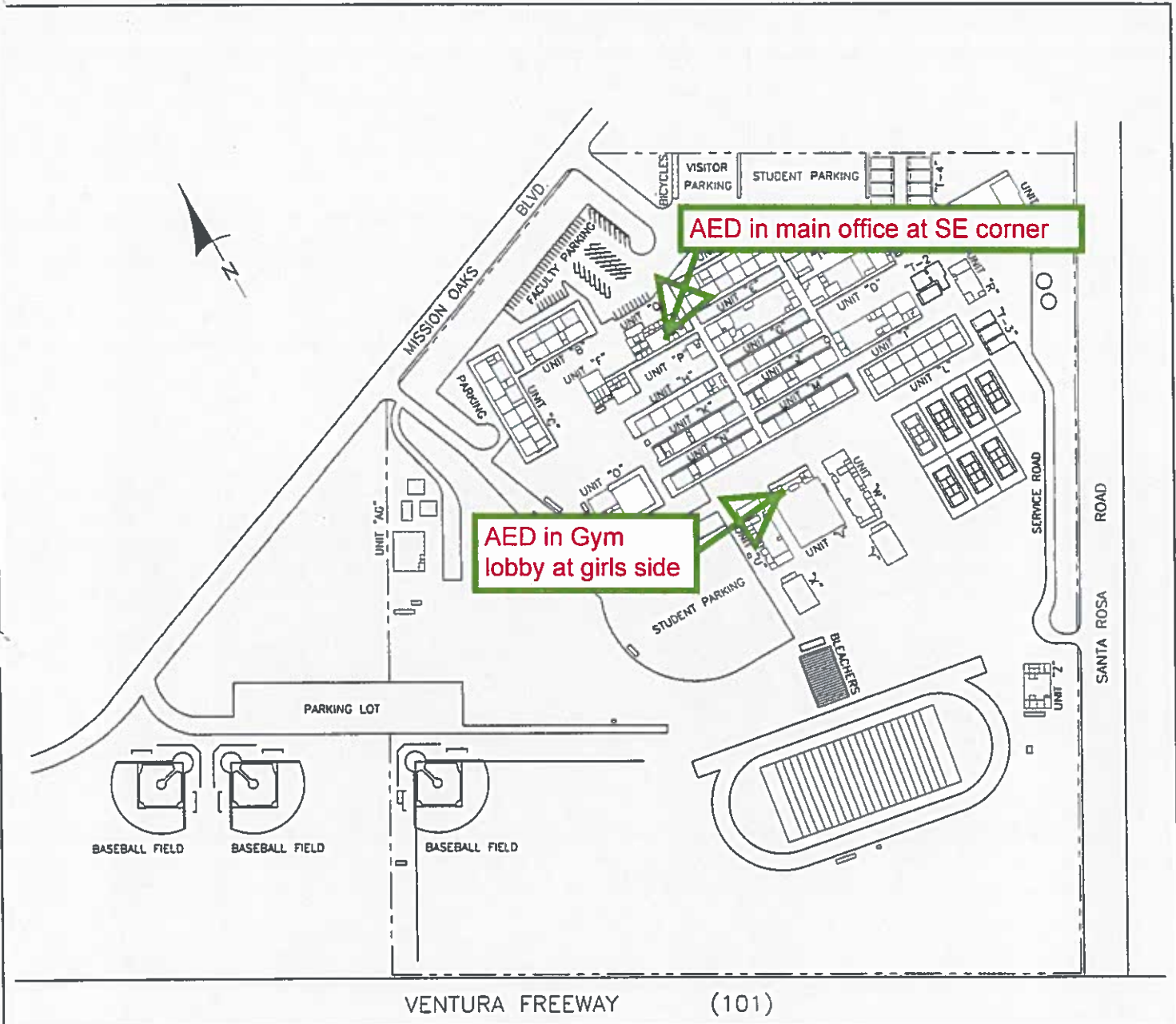
January 10, 2007
 Scale: 1"=100'-0"
 D.S.A.# 00000
 Page 1 of 23

Oxnard Union High School District
 Adolfo Camarillo High School, Ventura County

- New Construction
- Modernization/Reconstruction

Diagram of Building Area

- Existing 1-A
- Proposed 2-A
- Final 3-A



Siteplan
 Adolfo Camarillo High School
 4660 Mission Oaks Blvd.-Camarillo, CA 93012
 Web Site - www.ouhsd.k12.ca.us
 Phone (805) 389-6406 FAX (805) 389-6443

The above is measured in accordance with the laws and regulations governing the State School Building Lease-Purchase Program.
cadxservices@yahoo.com

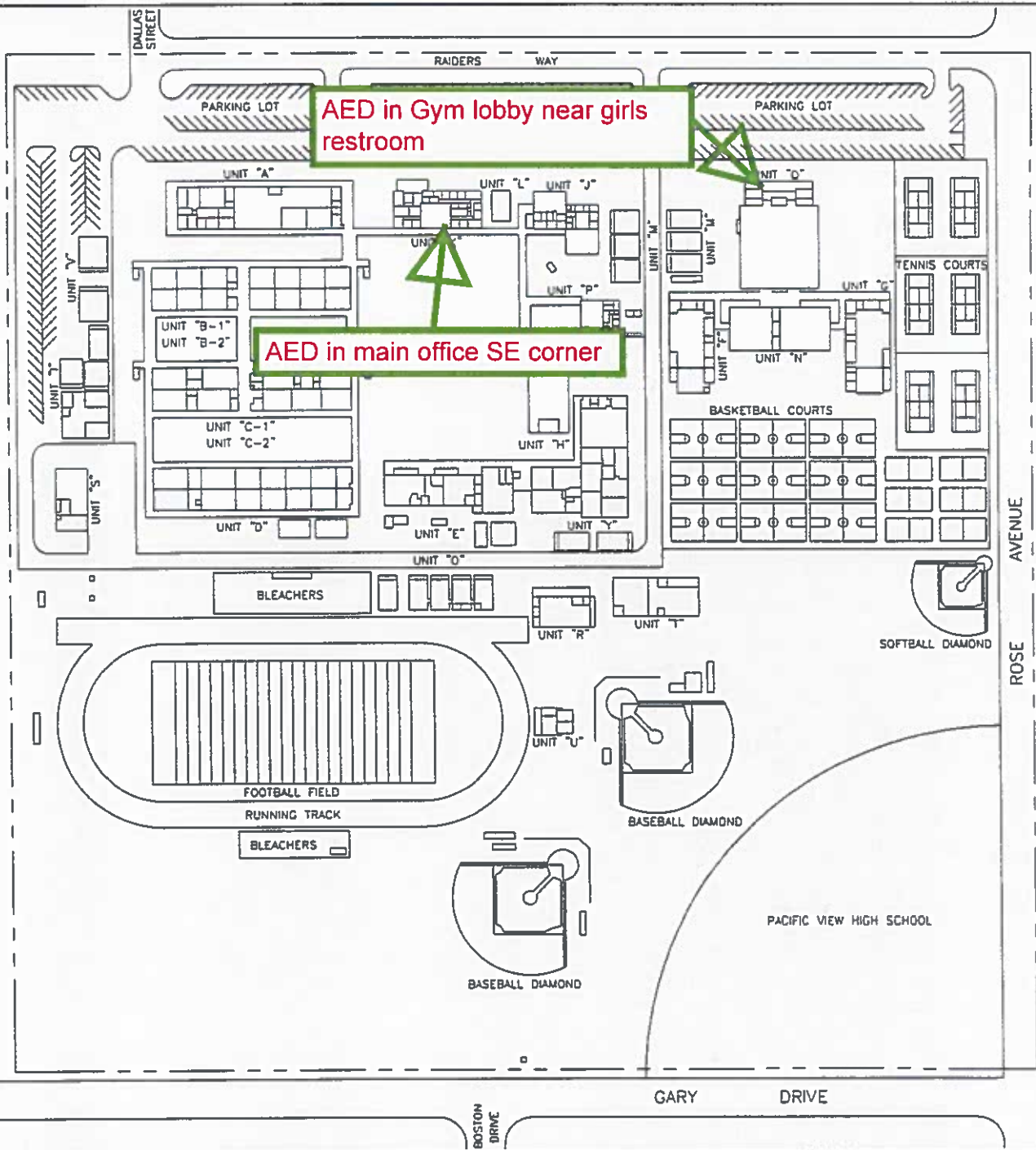
January 10, 2007
 Scale: 1"=300'-0"
 D.S.A.# 00000
 Page 1 of 104

Oxnard Union High School District
 Channel Islands High School, Ventura County

- New Construction
- Modernization/Reconstruction

Diagram of Building Area

- Existing 1-A
- Proposed 2-A
- Final 3-A



Siteplan
 Channel Islands High School
 1400 East Raiders Way - Oxnard, CA 93033
 Web Site - www.ouhsd.k12.ca.us
 Phone (805) 385-2787 FAX (805) 385-2764

The above is measured in accordance with the laws and regulations governing the State School Building Lease-Purchase Program.
cadxservices@yahoo.com

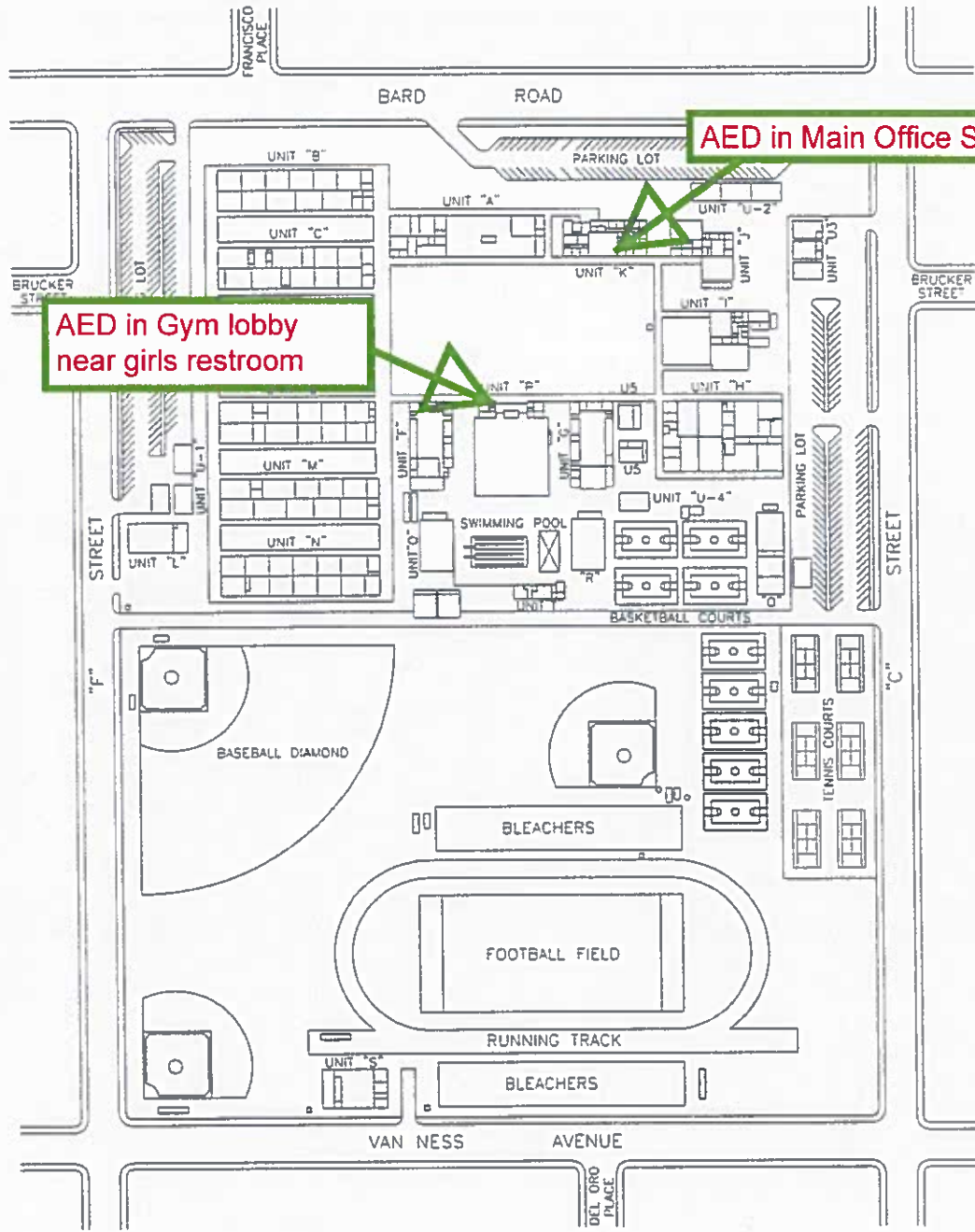
January 10, 2007
 Scale: 1"=200'-0"
 D.S.A.# 00000
 Page 1 of 91

Oxnard Union High School District
 Hueneme High School, Ventura County

- New Construction
- Modernization/Reconstruction

Diagram of Building Area

- Existing 1-A
- Proposed 2-A
- Final 3-A



Siteplan
 Hueneme High School
 500 Bard Road - Oxnard, CA 93033
 Web Site - www.ouhsd.k12.ca.us
 Phone (805) 385-2667 FAX (805) 385-2817

The above is measured in accordance with the laws and regulations governing the State School Building Lease-Purchase Program.
cadxservices@yahoo.com

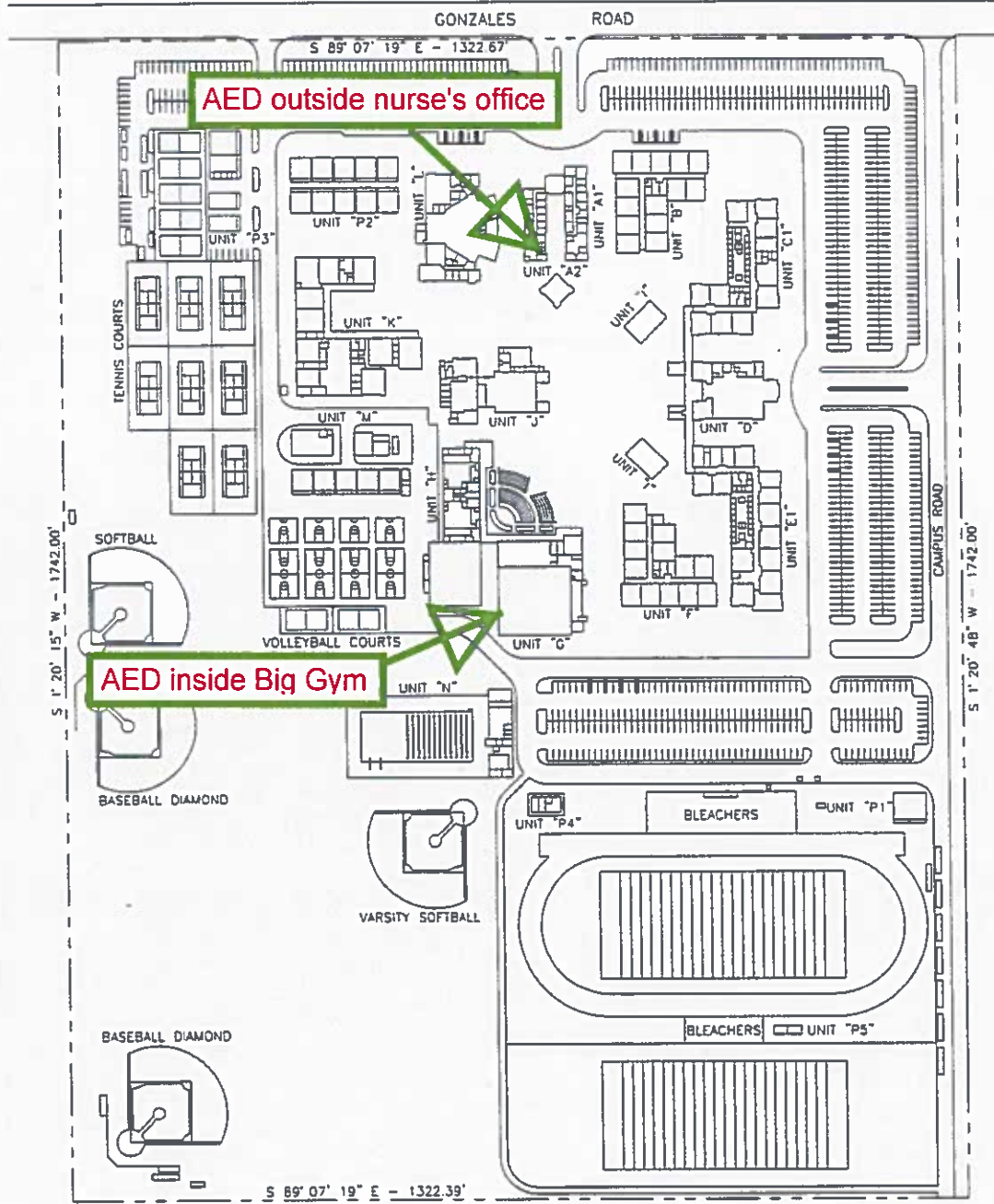
January 10, 2007
 Scale: 1"=240'-0"
 D.S.A.# 00000
 Page 1 of 88

Oxnard Union High School District
 Oxnard High School, Ventura County

- New Construction
- Modernization/Reconstruction

Diagram of Building Area

- Existing 1-A
- Proposed 2-A
- Final 3-A



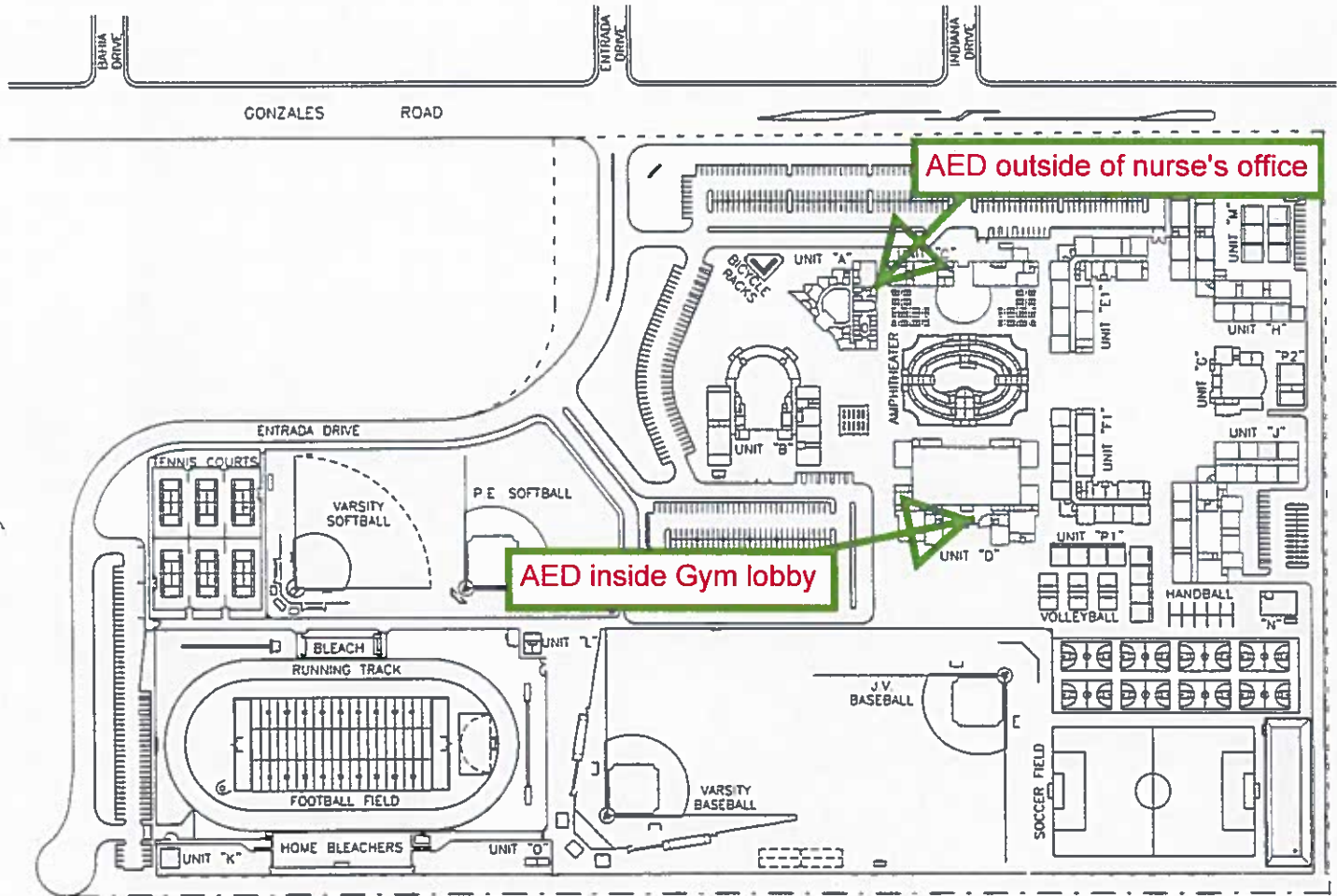
Siteplan
 Oxnard High School
 3400 West Gonzalez Road - Oxnard, CA 93030
 Web Site - www.ouhsd.k12.ca.us
 Phone (805) 278-2906 FAX (805) 278-2912

The above is measured in accordance with the laws and regulations governing the State School Building Lease-Purchase Program.
cadxservices@yahoo.com

February 7, 2007
 Scale: 1"=260'-0"
 D.S.A.# 56948
 Page 1 of 83

Oxnard Union High School District
 Pacifica High School, Ventura County
 New Construction
 Modernization/Reconstruction

Diagram of Building Area
 Existing 1-A
 Proposed 2-A
 Final 3-A



Siteplan
 Pacifica High School
 600 East Gonzales Road - Oxnard, CA 93030
 Web Site - www.ouhsd.k12.ca.us
 Phone (805) 278-5000 FAX (805) 278-7187

The above is measured in accordance with the laws and regulations governing the State School Building Lease-Purchase Program.
cadxservices@yahoo.com

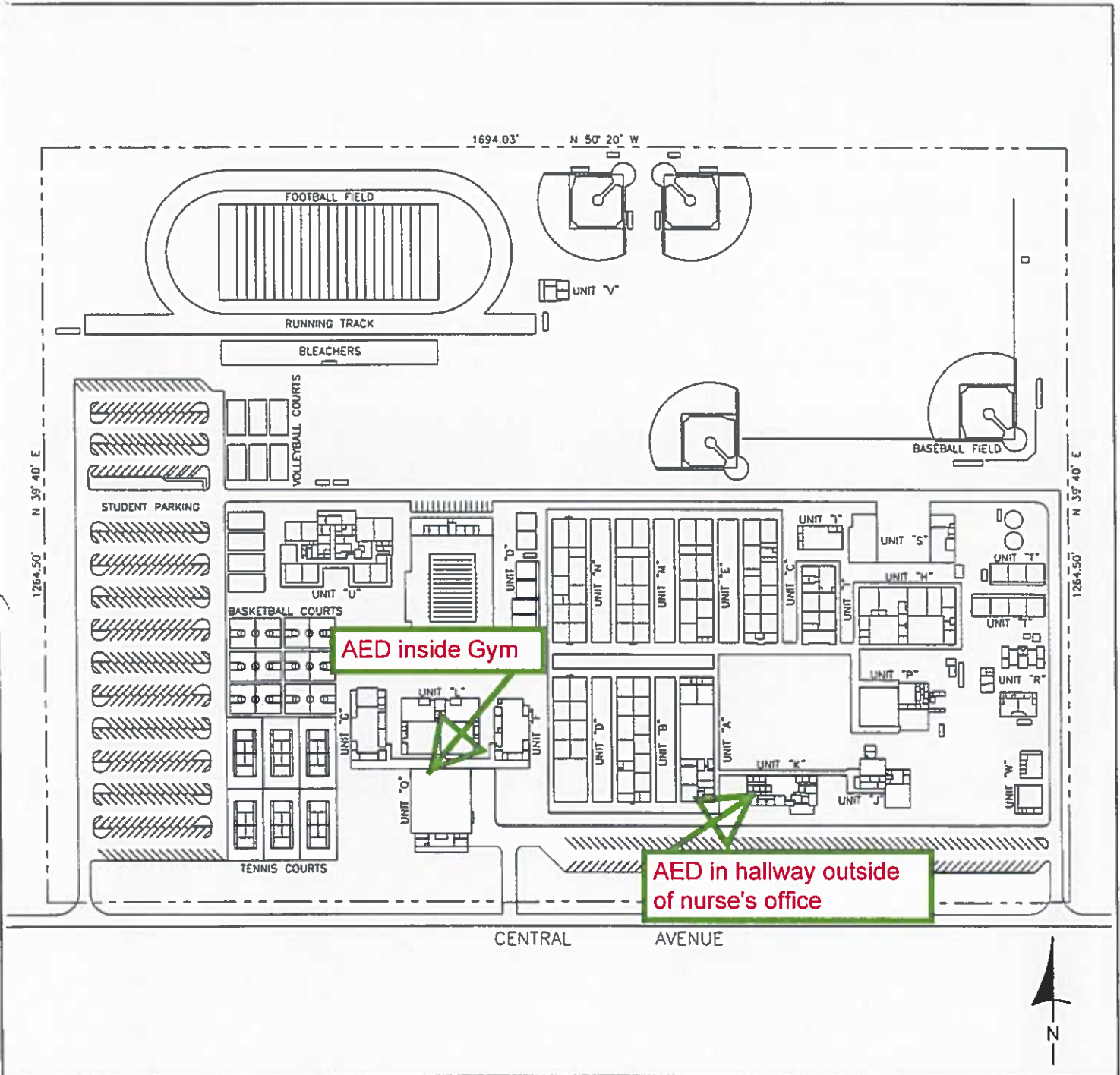
January 15, 2007
 Scale: 1"=300'-0"
 D.S.A.# 000000
 Page 1 of 70

Oxnard Union High School District
 Rio Mesa High School, Ventura County

- New Construction
- Modernization/Reconstruction

Diagram of Building Area

- Existing 1-A
- Proposed 2-A
- Final 3-A



Siteplan
 Rio Mesa High School
 545 Central Avenue - Oxnard, CA 93030
 Web Site - www.ouhsd.k12.ca.us
 Phone (805) 385-2704 FAX (805) 385-2706

The above is measured in accordance with the laws and regulations governing the State School Building Lease-Purchase Program.
 cadxservices@yahoo.com

January 10, 2007
 Scale: 1"=240'-0"
 D.S.A.# 00000
 Page 1 of 85